



The Ashbourne

4 bedroom detached house

Site Plan Reference Code

- Integral single garage
- Hallway with cloakroom/wc
- Lounge with feature bay window
- Dining room with French doors to rear garden
- Breakfast kitchen with separate utility room
- Master bedroom with fitted wardrobes and en-suite bathroom
- Family bathroom with separate shower cubicle
- Two further double bedrooms and one single bedroom
- Burglar alarm

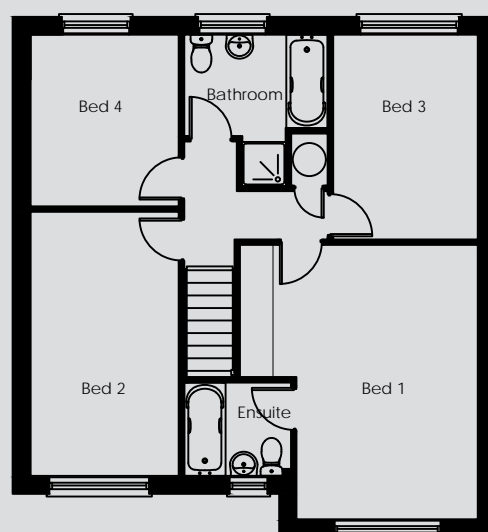
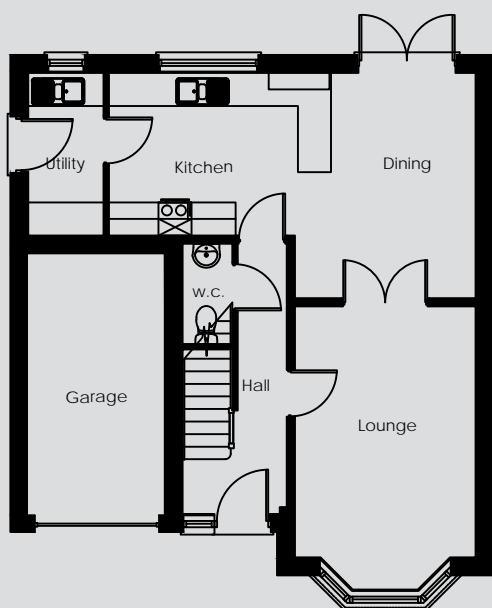


The elevation drawing, floor plans and other photographs shown in this leaflet depict a typical treatment of this house design found on a Redmile Homes developments. For the exact specification, details of external and internal finishes, dimensions and floor plan differences, please consult your Sales Executive.



The Ashbourne

4 bedroom detached house



Room	(mm)	(feet/inches)
Kitchen	3840 x 2950	12'8" x 9'9"
Lounge	4900 x 3285	16'1" x 10'10"
Dining Room	3785 x 2625	12'6" x 8'8"
Utility Room	2950 x 1300	9'9" x 4'4"
WC	1710 x 855	5'8" x 2'10"
Hall	5050 x 2000	16'7" x 6'7"
Garage	5000 x 2580	16'5" x 8'6"

Room	(mm)	(feet/inches)
Stairs	2000 x 850	6'7" x 2'10"
Master Bedroom	4460 x 3760	14'8" x 12'5"
En-suite	1980 x 1650	6'6" x 5'5"
Bedroom 2	4700 x 2600	15'6" x 8'7"
Bedroom 3	3715 x 2605	12'3" x 8'7"
Bedroom 4	3115 x 2605	10'3" x 8'7"
Bathroom	2630 x 2715	8'8" x 8'11"
Landing	2620 x 925	8'8" x 3'1"

www.redmilehomes.com

These particulars are for information purposes only and do not in whole or part constitute or form part of an offer or contract nor should any statement contained herein be relied upon as a statement or representation of fact. Neither W. Redmile & Sons, the selling Agent, nor any Director in or employee of the selling Agents accept liability or responsibility for any statement contained herein. W. Redmile & Sons does not hereby make or give nor does any Director in or employee have any authority to make or give representation or warranty whatsoever as regards the property or otherwise. Any prospective purchaser or lessee or other person in any way interested in the property should satisfy himself by inspection or otherwise as to the correctness of each statement in these particulars. These dimensions are accurate to within +/-50mm. They are not intended to be used for carpets sizes, appliance spaces or items of furniture.


...individual homes, just for you